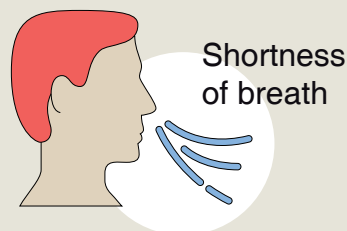
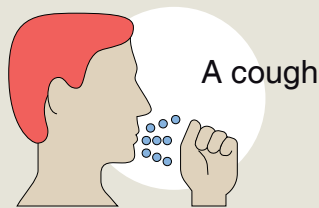
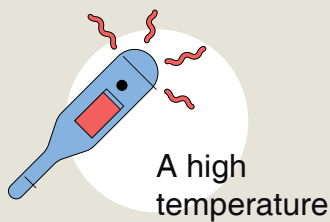


Can I be affected by coronavirus SARS-CoV-2?

- ▶ If you have recently travelled from an affected area,
- ▶ If you have come into contact with someone who is a confirmed case of coronavirus or in observation for coronavirus
- ▶ And if you have any of the following symptoms



Contact with 061 Salut Respon

Where they will assess your case and will provide medical advice and inform you on what next steps to take.

Coronavirus SARS-CoV-2 symptoms are similar to the flu and 80% of the cases are mild. Even though there is no specific treatment yet, there is treatment to control the symptoms, so medical assistance can improve its prognostic.

For more information, check canalsalut.gencat.cat/coronavirus or call **061** /Salut Respon

Cost de la trucada: segons operadors

What is coronavirus SARS-CoV-2?

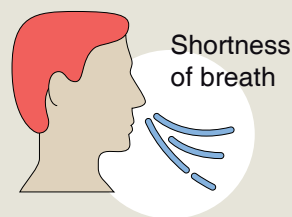
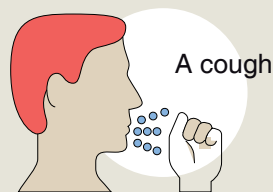
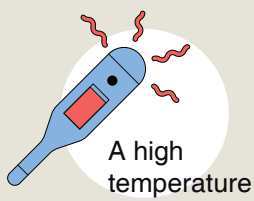
SARS-CoV-2 is a new type of coronavirus that can affect people. It was first detected in December 2019 in the city of Wuhan, China, and it has spread to other countries since then.

The symptoms are similar to the flu and 80% of the cases are mild. Severe cases generally affect the elderly or people with other pathologies.

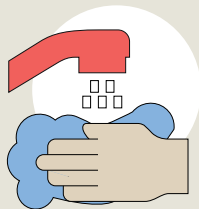
How it's spread

It is mainly spread in cough and sneeze droplets and in direct contact with body fluids.
Airborne transmission at a distance greater than 2 metres is unlikely.
The incubation period is between 2 and 14 days.

Symptoms of coronavirus



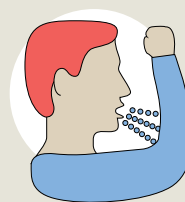
How it can be prevented



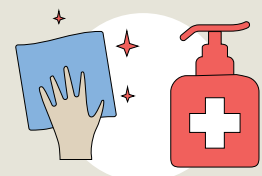
Wash your hands with soap and water often or use hand sanitiser gel.



Cover your mouth and nose with disposable tissues and wash your hands afterwards.



Cover your mouth and nose with your sleeve when coughing or sneezing and wash your hands afterwards.



Avoid sharing food, tools or other objects without cleaning them properly.

If you think you might be affected by coronavirus SARS-CoV-2, call 061 Salut Respon and we'll inform you on what to do.

For more information, check canalsalut.gencat.cat/coronavirus or call

061 /Salut Respon
Cost de la trucada: segons operadors



Generalitat de Catalunya

/Salut

Self-isolation at home, what does it mean?

- ▶ Self –isolation at home consists on **staying at home** and not going out in public spaces.
- ▶ **The primary objective** of the isolation measure is to **isolate the virus and prevent it from spreading.**
- ▶ **Healthcare professionals will decide** if the affected person needs to be isolated at home by assessing their clinical criteria and their health and social circumstances.
- ▶ **The healthcare professionals** will be in contact and monitor the affected person.
- ▶ The isolated person will be **able to live with their family members**, and they will all have to follow the measures indicated by the healthcare professionals.

